

St.Peter's C.E. Primary School



Relationships and Sex Education Policy

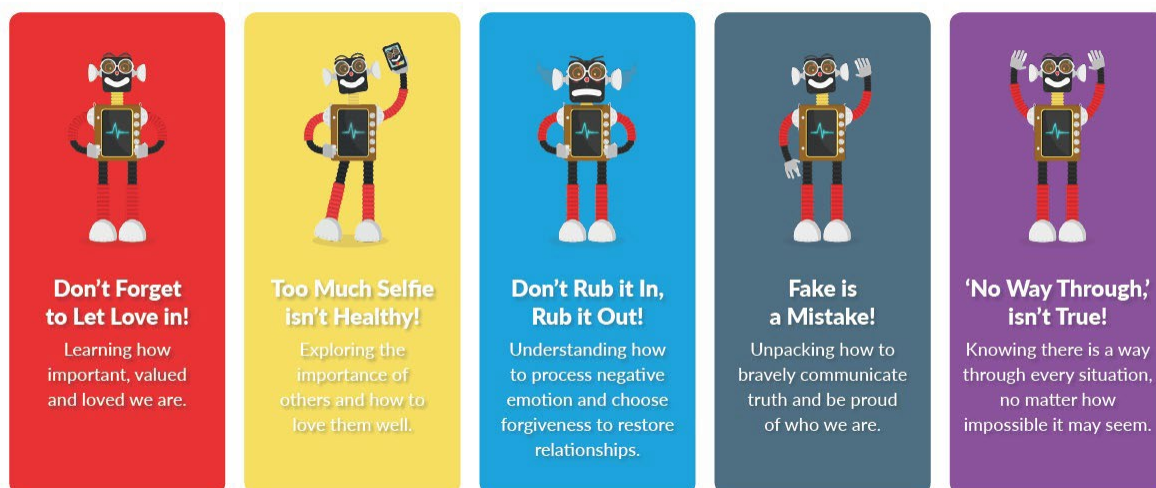
What is relationships and sex education?

St.Peter's recognises Relationships and Sex Education (RSE) as an integral part of the Personal, Social and Health Education (PSHE) curriculum which is also linked to Science. We aim to offer pupils a programme on human development, relationships, sexuality and family life within a safe, comfortable atmosphere and in a relaxed relationship between teacher and pupil. The programme is set within a moral framework and matched to the pupils' level of maturity. We believe that RSE can make a significant contribution to the development of the personal skills needed by pupils if they are to establish and maintain relationships. It also enables young people to make responsible and informed decisions about their health and well-being.

Aims and Objectives

The RSE programme at St Peter's CE Primary School reflects the school's Christian values and within this aims to develop in our pupils an understanding of the physical, biological, emotional, social, spiritual, legal and moral aspects of sex and sexuality. RSE teaching at St.Peter's sits within our whole school approach to PSHE which is through the Heartsmart programme. Through this programme we teach within five main principles:

The HeartSmart High Five



This prepares our pupils for the opportunities, responsibilities and experiences of adult life whilst also dealing with very current topical issues such as LGBTQ, cyber bullying, sexting and issues linked to self-esteem.

In addition to this, we provide the children a framework in which sensitive discussions can take place; prepare our children for puberty and the importance of health and hygiene and create a positive culture around issues of sexuality, LGBTQ and relationships.

Statutory Requirements

As a maintained primary school we must provide relationships education to all pupils as per section 34 of the Children and Social work act 2017.

We are not required to provide sex education but we do need to teach the elements of sex education contained in the science curriculum. We hold a puberty discussion in Year 5 and discuss both physical and emotional changes. As this is not part of our science curriculum, it is at the parents' discretion if they wish their child to attend this discussion.

In teaching RSE, we must have regard to guidance issued by the secretary of state as outlined in section 403 of the Education Act 1996.

Equality Act 2010

As a school we welcome our duties under the Equality Act 2010. The general duties are to:

- eliminate discrimination, harassment and victimisation
- advance equality of opportunity
- foster good relations

We understand the principles of the act and the work needed to ensure that those with protected characteristics are not discriminated against and are given equality of opportunity. We know that it is unlawful to discriminate against these groups with whom the pupil is associated with or perceived to be.

The primary aim of St.Peter's CE Primary School is to enable all pupils to take part as fully as possible in every part of school life by developing every child's self-confidence, recognising their strengths and encouraging them to achieve their full potential. At St.Peter's, we will take steps to advance equality of opportunity, foster good relations and eliminate discrimination or harassment across all the protected characteristics (age, race, gender reassignment, disability, marriage and civil partnership, religion and belief, pregnancy and maternity, gender, sexual orientation) within the school community.

The School's current Equality Policy is accessible on the School's website.

Policy Development

This policy has been developed in consultation with staff, pupils, governors and parents. The consultation and policy development process involved the following steps:

1. Review – a member pulled together all relevant information including relevant national and local guidance
2. Staff consultation – all school staff were given the opportunity to look at the policy and make recommendations
3. Parent consultation – parents and carers were sent a questionnaire about the teaching of RSE and PSHE at St.Peter's, directed to the policy and given the opportunity to put forward any views and/or recommendations
4. Pupil consultation – pupil interviews were conducted prior to the policy being written

Delivery of RSE

RSE is delivered by class teachers through the PSHE Heartsmart programme in mixed gender groups other than when it is deemed more appropriate for topics to be covered in single sex groups. Occasionally, appropriate and suitably experienced and/or knowledgeable visitors from outside school may be invited to contribute to the delivery of RSE in school. Parents will be informed if this is the case.

Biological aspects of RSE are taught within the science curriculum and other aspects are covered in religious education.

We have a number of books within school which are used at an age-appropriate level to support our RSE curriculum including elements relating to LGBTQ. These books can be found on our Heartsmart Long Term Plans on the school's website. In Year 5, pupils receive a stand-alone session on puberty and the physical and emotional changes occurring to the body at this time.

Specific Issues within RSE – Withdrawal

The 2019 RSE curriculum states that parents have the right to request that their child be excused from sex education within RSE only. Before any request is granted, we offer parents the opportunity to speak with the Headteacher or Deputy Headteacher to voice their concerns and clarify the nature of what is being taught.

Any requests for withdrawal from any form of sex education is automatically granted as long

as it doesn't fall within the statutory science National Curriculum. As stated in the 2019 RSE Curriculum:(parents or carers have) '...no right to withdraw from Relationships Education or Health Education'.

Child Protection and Confidentiality

Teachers need to be aware that effective relationship and sex education, which brings an understanding of what is and is not acceptable in a relationship, may lead to disclosure of a child protection issue.

The staff member will inform the designated child protection officer in line with LA procedures for child protection. A member of staff cannot promise confidentiality if concerns exist.

Monitoring and Assessment

The teaching and assessment of RSE in school is monitored by the RE/PSHE/RSE Leader(s) in line with the school's monitoring and assessment calendar. This will take place through lesson observations of our new Heartsmart Programme and through pupil interviews.